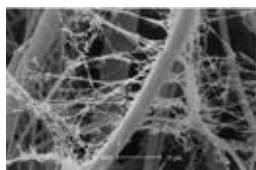
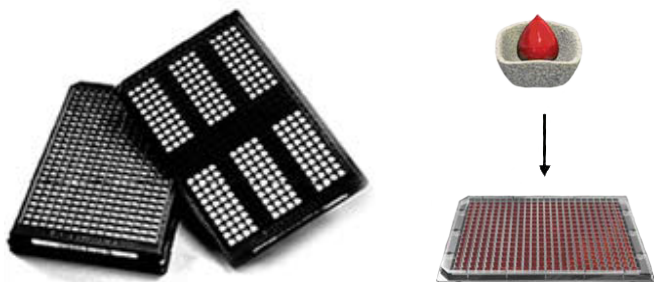


GenTegra GenPlate®

Risk-free, High Density Ambient Dry State Storage and Transport of Biological Samples.



GenPlates are the only high density, dry-state storage technology with 20+ years of real-time stability data that also decreases storage and shipment costs while conserving space, time, and energy.

GenPlate GenSaver™ Technology

GenPlates are a high density, proprietary format for storing and transporting biosamples at ambient temperatures, in the dry-state, embedded in 6 mm discs of GenSaver paper. GenSaver paper is a macroporous cellulose matrix treated with GenTegra's Active Chemical Protection. Upon application of 10µl of blood or other biosample directly to the 6mm element of GenSaver paper and drying, the cells lysis, and released DNA into the fibrous matrix of the GenSaver paper. The entwined biosample is dried completely at room temperature and the dried sample is sealed with an adhesive cover sheet and is ready for storage or transport at ambient temperature.

Over 20 years of data and analysis exist for DNA storage on paper and GenTegra's Active Chemical Protection for protecting DNA on GenSaver paper has been thoroughly validated. DNA stored on and recovered from GenSaver paper has been reliably used in demanding downstream experiments such as Illumina and Affymetrix microarrays, HLA typing, WGA, PCR, and genotyping and NGS.

GenSolve™ Classic- for better DNA recovery

When DNA is required for downstream analysis, high-quality double stranded DNA from GenSaver paper can be reliably recovered in high yield using the GenSolve chemistry. Yields using GenSolve are routinely >95% of the available DNA.

Applications

- Cost-effective long-term biobanking and biosample storage
- Low cost shipping option
- Storage for retained biosamples

Reliable experimental-sized aliquots

- Each element yields DNA sufficient for whole genome sequencing
- Room temperature format eliminates freeze-thaw cycles and subsequent degradation of the sample
- GenSaver paper has a proven history of biosample stability making GenPlates a safe and secure choice for biosample storage at room temperature
- No cross-contamination of samples; each element is individually packaged
- Foil and plastic seals allow for multi-aliquot storage using a single container while maintaining single-aliquot use

High-throughput automation compatible storage

- GenPlates are compatible with commercially available liquid handlers and robotic systems
- Barcodes that are human readable allow for positive convenient labeling and faster aliquot retrieval

Flexible & versatile

- Storage for multiple sample types
- Storage for one to 24 unique, multi-aliquot samples

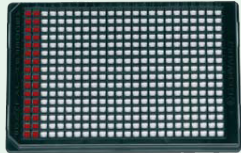
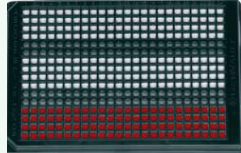
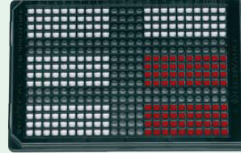
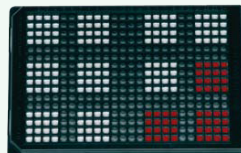

Economical shipping & transport

- GenSaver Active Chemical Protection protects DNA during shipment of samples without dry ice, and lowers overall shipment weight, resulting in more economical transportation

Cost-effective & sustainable

- Small footprint creates an economical and space efficient storage
- Low energy requirement compared to freezer storage
- Better organized samples = better time management

GenTegra

GenPlate Region Configuration	Number of Elements per Region	GenPlate Configuration
<p>1 Region</p> <p>For maximum number of single samples or for maximum amount of sample stored</p>	384	
<p>3 Region</p> <p>Holds three patients per GenPlate</p>	96	
<p>6 Region</p> <p>Well suited to DNA samples extracted from buccal swabs</p>	40	
<p>12 Region</p> <p>Well suited to DNA samples extracted from mouthwash collection</p>	16	
<p>24 Region</p> <p>Our most popular and commonly use format for human blood sample storage</p>	4 or 6	

Specifications

- GenPlates are 384-well half height (ANSI/SLAS 1-2004 standard) microplates
- Each well of sample region contains an element, which is a 6mm disc of GenSaver paper
- Each element in the well will hold 10µl of blood, purified genomic DNA (gDNA), purified plasmid DNA (pDNA), crude bacterial suspension (clones), or glycerol bacterial stock
- Using GenSolve each element yields approximately 260ng of DNA
- Each plate is foil sealed top and bottom.
- GenPlates are formatted into six different region patterns
- Each plate contains a 14-digit barcode which specifies plate type, region configuration, and unique plate number

For more information:



ITSI-Biosciences
 Phone: 814-262-7331 or Fax: 814-262-7334
 Email: itsi@itsibio.com

Manufactured by:

GenTegra[®]

Toll free: 844.540.4000
 Tel: 925.461.3010 | Fax: 925.461.3086
 www.GenTegra.com